

VPX Carrier Data Sheet

Revision History:

Rev 1.0 25.11.2015 Initial version

Table of Contents

1 Mechanical Drawing.....	2
2 Layout / Position of the connectors.....	3
3 Connectors.....	4
4 Connector Pin Assignments.....	5

Index of Tables

Table 1: Connectors.....	4
Table 2: Fan Connector.....	5
Table 3: I2C_5V Connector.....	5
Table 4: Digital Temp Connector.....	5
Table 5: I2C_3V Connector.....	5
Table 6: Outputs Connector.....	5
Table 7: Inputs Connector.....	6
Table 8: Temp1 Connector.....	6
Table 9: Temp2 Connector.....	6
Table 10: VMEAS1 Connector.....	6
Table 11: VMEAS2 Connector.....	6
Table 12: Power Connector.....	6
Table 13: 1P1 Connector.....	7
Table 14: 1P2 Connector.....	8
Table 15: IPMB Connector pinout.....	9

1 Mechanical Drawing

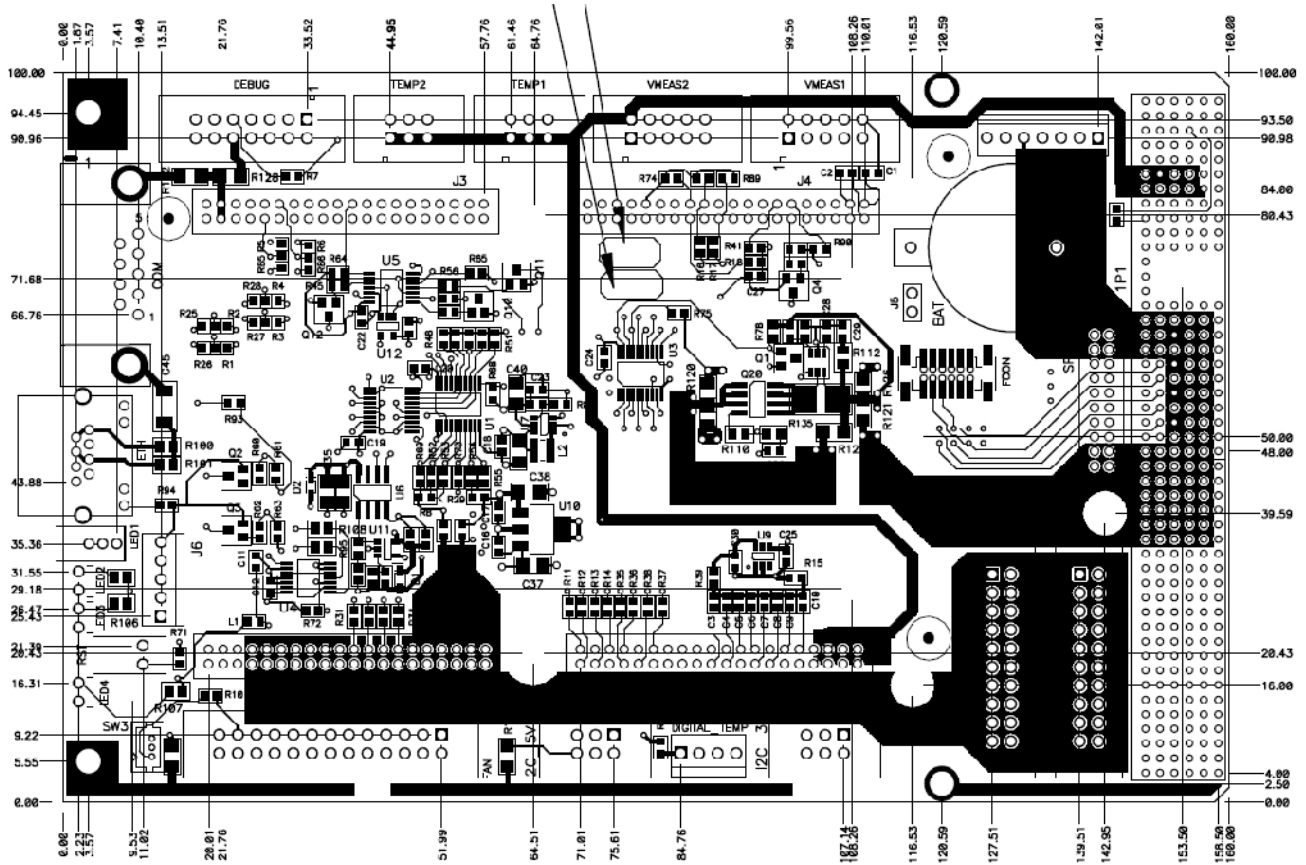


Figure 1: PCB Dimensions

2 Layout / Position of the connectors

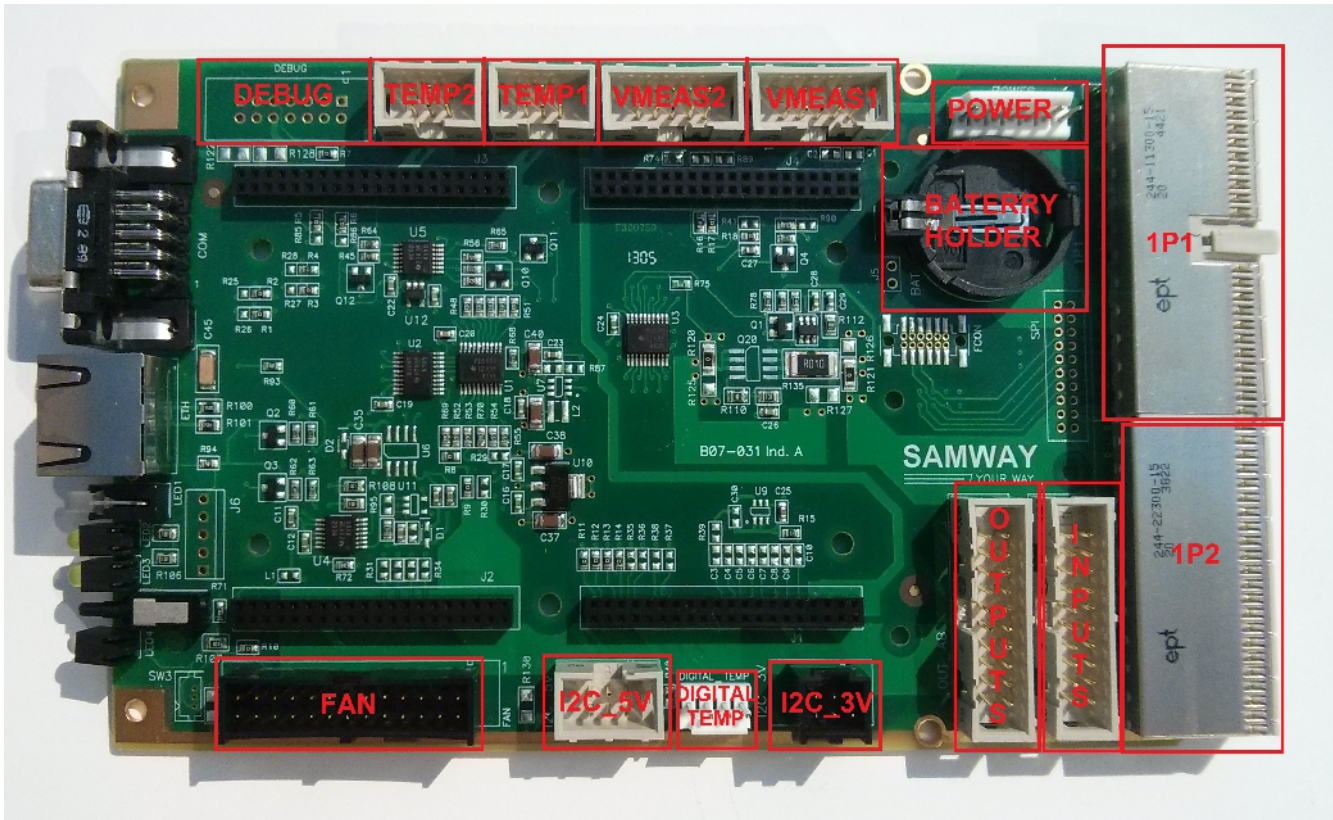


Figure 2: Connector Positions

Note:

SMW05A002 – Fix mounted version: all connectors assembled except 1P1 and 1P2.

SMW05A012 – Pluggable version: all connectors not assembled except 1P1 and 1P2.

3 Connectors

Connector	Manufacturer	Part Number
Power	TE Connectivity	640456-7
VMEAS1,VMEAS2	Wuerth	61201021621
TEMP1,TEMP2	Wuerth	61200621621
FAN	Molex	90130-1226
I2C_5V	Harting	09185066324
Digital Temp	TE Connectivity	640456-4
I2C_3V	Molex	90130-1206
Outputs, Inputs	Wuerth	61202021621
1P1	EPT	244-11300-15
1P2	EPT	244-22300-15
Battery Holder	Keystone Electronics	1066
IPMB	Harwin	M80-8531042

Table 1: Connectors

4 Connector Pin Assignments

PIN	SIGNAL	PIN	SIGNAL
1	+3.3V	2	
3	+3.3V	4	
5	GND	6	PWM_1
7	GND	8	TACH_11
9	TACH_10	10	TACH_9
11	PWM_3	12	+5V
13	TACH_8	14	TACH_7
15	GND	16	TACH_6
17	PWM_2	18	TACH_5
19	TACH_4	20	+5V
21	TACH_3	22	PWM_1
23	GND	24	TACH_2
25	TACH_1	26	TACH_0

Table 2: Fan Connector

PIN	SIGNAL
1	SDA_2
2	SCL_2
3	SYS_RST
4	INT_2
5	+5V
6	GND

Table 3: I2C_5V Connector

PIN	SIGNAL
1	+5V
2	SDA_3
3	GND
4	SCL_3

Table 4: Digital Temp Connector

PIN	SIGNAL
1	SCL_1
2	VCC
3	SDA_1
4	GND
5	SDA_0
6	SCL_0

Table 5: I2C_3V Connector

PIN	SIGNAL	PIN	SIGNAL
1	OUT1	2	OUT2
3	OUT3	4	+5V
5	OUT4	6	OUT5
7	GND	8	OUT6
9	OUT7	10	OUT8
11	OUT9	12	+5V
13	OUT10	14	OUT11
15	GND	16	OUT12
17	OUT13	18	OUT14
19	OUT15	20	OUT16

Table 6: Outputs Connector

PIN	SIGNAL	PIN	SIGNAL
1	IN1	2	IN2
3	IN3	4	+5V
5	IN4	6	IN5
7	GND	8	IN6
9	IN7	10	IN8
11	IN9	12	+5V
13	IN10	14	IN11
15	GND	16	IN12
17	IN13	18	IN14
19	IN15	20	IN16

Table 7: Inputs Connector

PIN	SIGNAL
1	SYSRESET#
2	ACFAIL#
3	V4 (-12V)
4	GND
5	V3 (+12V)
6	GND
7	V1 (+3.3V)
8	GND
9	V2 (+5V)
10	GND

Table 10: VMEAS1 Connector

PIN	SIGNAL
1	VREF
2	Temp3
3	VREF
4	Temp2
5	VREF
6	Temp1

Table 8: Temp1 Connector

PIN	SIGNAL
1	SYSFAIL#
2	VREF
3	V7
4	GND
5	V8
6	GND
7	V6
8	GND
9	V5
10	GND

Table 11: VMEAS2 Connector

PIN	SIGNAL
1	VREF
2	Temp6
3	VREF
4	Temp5
5	VREF
6	Temp5

Table 9: Temp2 Connector

PIN	SIGNAL
1	
2	
3	GND
4	GND
5	
6	+3.3V_AUX
7	PWR_FAIL

Table 12: Power Connector

PIN	A	B	C	D	E
25	ETH_TX+	ETH_RX+	GND	E1R+	T1R+
24	ETH_TX-	ETH_RX-	PRIM_IN#	E1R-	T1R-
23	GND	GND	PRES#	GND	GND
22	HLY_OUT#	HLY_IN#	PRIM_OUT#	UPDATE_RX	UPDATE_TX
21	GND	SDA_3	SCL3	INT_3	GND
20	RS232_TX				VREF
19		VREF	TEMP6	AN4_IN	TEMP5
18		VCC	TEMP4	AN5_IN	
17	RS232_RX	VCC	TEMP5	AN7_IN	
16		VCC	TEMP2	AN6_IN	
15		VCC	TEMP1	SYSFAIL*	
11	SDA_2	SCL_2	INT_2	GND	FTP_0
10	TACH_0	TACH_1	TACH_2	+3.3V_IN	FTP_1
9	PWM1	TACH_3	TACH_4	+5V_IN	FTP_2
8	PWM2	TACH_5	TACH_6	+3.3V_IN	FTP_3
7	PWM3	TACH_7	TACH_8	+5V_IN	AN2_IN
6	PWM1	TACH_9	TACH_10	+3.3V_IN	AN3_IN
5	TACH11	SDA_1	SCL_1	+5V_IN	AN4_IN
4	GND	SDA_0	SCL_0	+3.3V_IN	AN0_IN
3	IPMB_SDA_B	IPMB_SCL_B	IPMB_SDA_A	+5V_IN	AN1_IN
2	IPMB_SCL_A			POWER_FAIL	GND
1	SYSRESET*	ACFAIL*	SYS_RST_SW	GA1	GA0
	A	B	C	D	E

Table 13: IP1 Connector

PIN	A	B	C	D	E
22					
21			+5V		
20					
19			GND		
18					
17					
16					
15				OUT10	OUT9
14			+5V	OUT8	OUT7
13	OUT16	OUT15		OUT6	OUT5
12	OUT14	OUT13		OUT4	OUT3
11	OUT12	OUT11	GND	OUT2	OUT1
10					
9			+5V		
8			GND		
7					
6					
5					
4			GND		IN16
3	IN13	IN10	IN7	IN4	IN1
2	IN14	IN11	IN8	IN5	IN2
1	IN15	IN12	IN9	IN6	IN3

Table 14: 1P2 Connector

IPMB connector. Mounted only for fixed mounted version on 1P1 footprint, pins A2-E2, A3-E3

		IPMB-SDA-A	IPMB-SCL-B	IPMB-SDA-B
GND				IPMB-SCL-A

Table 15: IPMB Connector pinout